

MEADOWVIEW FARM, INC.

SPRING SHOW



Lake Effects Horse Shows

May 29–30, 2010

Welcome to Meadowview Farm's Spring Horse Show

We're glad to have you and your horse join us for our 25th year of presenting horse shows ... and welcome to Meadowview Farm's "Spring Horse Show." Join us as we celebrate sunny skies, green pastures, and the Memorial Day weekend.

Do take time to study the class list. Just a reminder that you can get nomination forms for 2010 in the show secretary stand.

Also, please take note that in all of the "Adult" classes (Adult Medal, Adult Hunter, Adult Equitation), riders may choose 2'3" or 2'6" with or without oxers. Please declare with the starter.

Cathy's Cube (MVF's food stand) will have some new specials and of course the famous smoothies.

And, as always, if you need anything to make your stay more comfortable — please contact us or our staff.

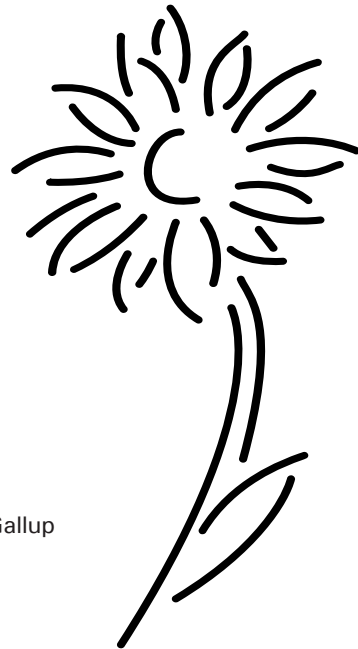
Enjoy the show!

Your hosts, Les and Cathy Johnson

Show Officials

Judge: Lisa Oberg
Manager: Cathy Johnson
Secretary: Maxine Henderson
EMT: Steve Johnson
Jump Manager: Matt Johnson

Prizelist design: P. Gallup



Area Hotels

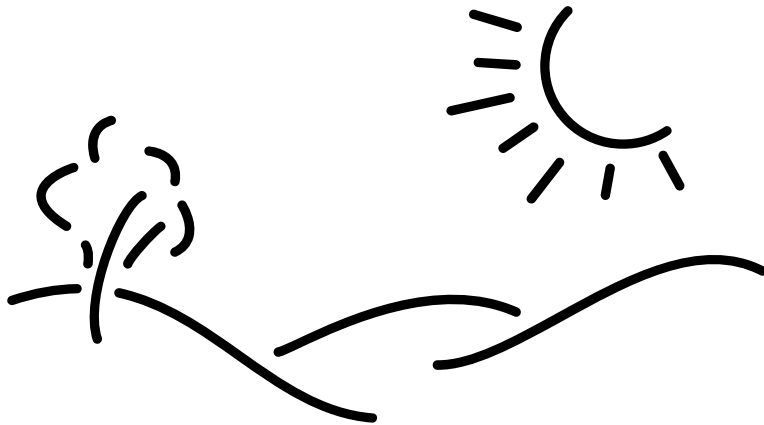
You will find a number of hotels in the greater Grand Rapids metropolitan area. We offer this list of those located most conveniently to Meadowview Farm:

Hotel / Address	Telephone
HAMPTON INN, 5200 28th St. SE, Grand Rapids	(616) 575-9144
BAYMONT INN & SUITES 2873 Kraft Ave SE, Grand Rapids	(616) 956-3300
CROWN PLAZA, 5700 28th St. SE, Grand Rapids	(616) 957-1770
DAYS INN DOWNTOWN, 310 Pearl NW, Grand Rapids	(616) 235-7611



LEHS Mini Maclay Horsemanship Class

LEHS Mini Maclay Horsemanship Class Rules: Open to Junior and Adult riders. May be split if entries warrant. Riders may show in the Limit Equitation or Junior Equitation at LEHS shows, and be eligible for this class. Jumps will be 2' 6" - 2' 9". In-and-out obstacles required. (All riders shall compete over a course of at least eight jumps, with two changes of direction. The top eight riders or one third of the class (whichever is more) are then required to show at walk, trot, and canter.) Tests 1-19 are allowed; except judge may not ask riders to jump without stirrups or change horses to jump. (To be judged on hands, seat, guidance, and control of horse. The under saddle performance of those riders selected to show under saddle shall count 50%. No martingales allowed for the flat phase. Only one rider per horse. Four riders must complete the course for the class to count.) A first or second place qualifies you to show in the finals. Once you win the class, you may not compete in the class until the finals. A second allows you to continue to compete.



Please Take Note

Your signature on the enclosed entry form constitutes that you have read and do understand the following statement (1994 PUBLIC ACT HOUSE BILL NO. 5006):

WARNING: Under the Michigan Equine Activity Liability Act, an equine professional is not liable for an injury to or the death of a participant in an equine activity resulting from an inherent risk of the equine activity.

Meadowview Farm, Inc. Horse Show Rules and Regulations

ENTRIES: Entries close Tuesday before the show. NO FAX OR PHONE ENTRIES WILL BE ACCEPTED. All entry forms must be signed by the owner or his/her authorized agent and trainer, and accompanied by a signed check for all fees made payable to Meadowview Farm, Inc. All riders must have a signed entry form in the show office before they school in any ring.

Entry Fees are \$15.00 per class, including Medals. A flat post entry fee of \$10.00 will be charged for those not entered by 6:00 P.M. Tuesday. A processing fee of \$25.00 plus collection fees will be made for any non-negotiable checks.

Entry fees are refundable with a vet certificate before the end of show hours only.

STABLING: Stall fees are \$50.00 per show. Limited stabling is available, on a first-pay-first-serve basis. No stall refunds given. First bedding provided.

SCHOOLING: Available during the following times (subject to change):
Friday 12:00 – dusk; Saturday 6:00 – 7:30 a.m.; Sunday 6:00 – 7:30 a.m.

GENERAL INFORMATION: Management reserves the right to combine, divide, or cancel classes.

MEDIC: an EMT medic will be on duty the day of show. Fee is \$6.00.

HEADGEAR: All Riders MUST wear approved headgear (ASTM / SEI certified helmet) with harness secured while mounted on the show grounds. Adults are required to wear hard hats when jumping anywhere on the showgrounds.

NO SMOKING in the barn or indoor arena!

NO DOGS ALLOWED! Visiting dogs are a disturbance to the exhibitors, so please leave your dogs home for safety reasons.

Food will be available at a concession stand located on the showgrounds.

Meadowview Farm, Inc. will not be held responsible for any accidents, damages, or losses to exhibitors' property or livestock.

All classes shall follow the AHSA rules and/or LEHS rules.

For all MHJA classes riders must be 2009 members of the MHJA. Four riders must complete the course.

No rider over 12 years of age may compete on a Small pony. No rider over 14 years of age may compete on a Medium pony.

Pony Riders may choose 2' or 2'3" with or without oxers. Please declare with the starter.

Riders must declare their fence height with the starter, when applicable, before the class begins.

An order of go will be posted in all Medal and Jumper classes and will be followed. An order of go may be used in other classes when necessary, to expedite the show.

Braiding is optional.

A first place award and six ribbons will be awarded for each class, and a Championship and Reserve Championship will be awarded in all divisions.

Please Take Note

Your signature on the enclosed entry form constitutes that you have read and do understand the following statement (1994 PUBLIC ACT HOUSE BILL NO. 5006):

WARNING: Under the Michigan Equine Activity Liability Act, an equine professional is not liable for an injury to or the death of a participant in an equine activity resulting from an inherent risk of the equine activity.

Jumping Ring Saturday, May 29 8:00 A.M.

1.	Low Warm-up	1' 9"
* 2.	Maiden Ridden Hunter	1' 9"
* 3.	Maiden Equitation	1' 9"
* 4.	Maiden Equitation on the flat	
* 5.	Novice Ridden Hunter	2' 0"
* 6.	Novice Equitation	2' 0"
* 7.	Novice Equitation on the flat	
8.	Walk/Trot Hunter under saddle	
9.	Walk/Trot Equitation	
10.	Leadline Equitation	
* 11.	Low Hunter	2' 3"
* 12.	Low Hunter	2' 3"
* 13.	Low Equitation	2' 3"
* 14.	Pony Hunter	2' 0" or 2' 3"
* 15.	Pony Equitation	2' 0" or 2' 3"
* 16.	Pony Equitation on the flat	

**Polo Ring Saturday, May 29
following Jumping Ring**

* 17.	Special Hunter	2' 6"
* 18.	Pre-Green Hunter	2' 6"
* 19.	Pre-Green Hunter under saddle	
* 20.	Adult Hunter	2' 6"
* 21.	Adult Hunter	2' 6"
* 22.	Adult Hunter under saddle	
* 23.	Children's Hunter	2' 6"
* 24.	Limit Equitation	2' 6"
* 25.	Limit Equitation on the flat	
26.	LEHS Mini Maclay	2' 6" - 2' 9"
* 27.	Open Hunter	2' 9"
* 28.	Junior / Amateur Hunter	2' 9"
29.	Training Jumper	2" 6"
30.	Mini Jumper	2" 6"

Polo Ring Sunday, May 30 8:00 A.M.

* 31.	Special Hunter under saddle	
* 32.	Special Hunter	2' 6"
* 33.	Pre-Green Hunter	2' 6"
* 34.	Adult Hunter	2' 6"
* 35.	Adult Equitation on the flat	
* 36.	Adult Equitation	2' 6"
* 37.	LEHS Adult Medal	2' 6"
* 38.	Children's Hunter	2' 6"
* 39.	Children's Hunter under saddle	
* 40.	LEHS Limit Medal	2' 6"
* 41.	Junior / Amateur Hunter	2' 9"
* 42.	Junior / Amateur Hunter under saddle	
* 43.	Junior / Amateur Equitation	2' 9"
* 44.	Junior / Amateur Equitation on the flat	
* 45.	LEHS Open Medal	2' 9"
* 46.	Open Hunter	2' 9"
* 47.	Open Hunter under saddle	
48.	Training Jumper	2" 6"
49.	Mini Jumper	2" 6"

**Jumping Ring Sunday, May 30
following Polo Ring**

50.	Low Warm-up	1' 9"
* 51.	Maiden Ridden Hunter	1' 9"
* 52.	Maiden Ridden Hunter under saddle	
* 53.	Novice Ridden Hunter under saddle	
* 54.	Novice Ridden Hunter	2' 0"
* 55.	Low Hunter under saddle	
* 56.	Low Equitation on the Flat	
* 57.	Low Hunter	2' 3"
58.	LEHS Mini-Medal	2' 3"
* 59.	Pony Hunter under saddle	
* 60.	Pony Hunter	2' 0" or 2' 3"
61.	LEHS Pony Medal	2' 0" or 2' 3"

* Denotes LEHS recognized classes